

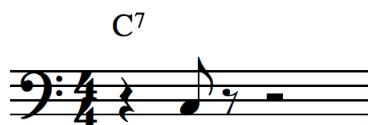
# Enclosure Tone Exercises

by Dr. Donovan Stokes

## From the Lowdown with Dr. D column on No Treble:

<http://www.notreble.com/buzz/2012/11/05/enclosure-tone-exercises-for-bassists/>

Begin with the root of a C7 chord:



Precede the C with an D and a B:



In general, it sounds best for the lower note of the enclosure to be 1/2 step away from the target note, even if that means making it chromatic (i.e. not in the scale). For example, if our target note is G (with C7 harmony) we would sharp the lower note F to make it an F#:



If we wanted to add a bit of bebop flavor to our ideas, we would play double chromatic enclosure tones, i.e. both notes would be 1/2 step away from the target note. One, or both notes may actually be chromatic in relation to the scale, but both will be 1/2 away from the target note:



To become comfortable with playing enclosures I suggest playing your daily arpeggios with enclosures around the target notes. For example:

