

# SUBDIVISION EXERCISES

## TRIPLETS

Two measures of eighth-note triplets in bass clef. Each measure contains four groups of three eighth notes, with a '3' written below each group. The notes are ascending in pitch.

Two measures of quarter-note triplets in bass clef. Each measure contains four groups of three quarter notes, with a '3' written below each group. The notes are ascending in pitch.

Two measures of eighth-note triplets in bass clef. Each measure contains four groups of three eighth notes, with a '3' written below each group. The notes are ascending in pitch.

Two measures of quarter-note triplets in bass clef. Each measure contains four groups of three quarter notes, with a '3' written below each group. The notes are ascending in pitch.

Two measures of eighth-note triplets in bass clef. Each measure contains four groups of three eighth notes, with a '3' written below each group. The notes are ascending in pitch.

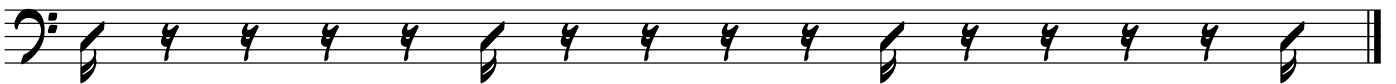
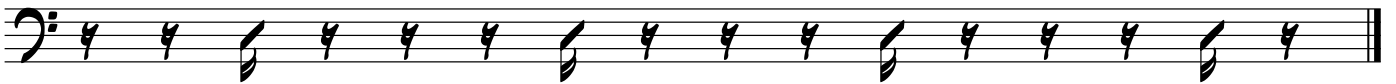
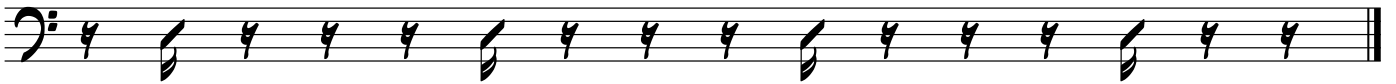
Two measures of quarter-note triplets in bass clef. Each measure contains four groups of three quarter notes, with a '3' written below each group. The notes are ascending in pitch.

Two measures of eighth-note triplets in bass clef. Each measure contains four groups of three eighth notes, with a '3' written below each group. The notes are ascending in pitch.

Two measures of quarter-note triplets in bass clef. Each measure contains four groups of three quarter notes, with a '3' written below each group. The notes are ascending in pitch.

# SUBDIVISION EXERCISES

16THS



# SUBDIVISION EXERCISES

COMBINED

