

NIGHT PASSAGE (WEATHER REPORT)

JACO

SWING FEEL
SHUFFLE

5 **(A)**

9

13

17

23 **(B)**

27

33 **(C)**

37

2

41

45

49

53

56 **(D)**

60

64

68

72

75 **(E)**

79



83 Musical staff with bass clef, key signature of two flats (Bb, Eb), and a sequence of eighth and quarter notes.

87

87 Musical staff with bass clef, key signature of two flats (Bb, Eb), and a sequence of eighth and quarter notes.

91

91 Musical staff with bass clef, key signature of two flats (Bb, Eb), and a sequence of eighth and quarter notes, including a measure with a fermata.

95

95 Musical staff with bass clef, key signature of two flats (Bb, Eb), and a sequence of eighth and quarter notes.

99

99 Musical staff with bass clef, key signature of two flats (Bb, Eb), and a sequence of eighth and quarter notes, including a measure with a fermata.

103

103 Musical staff with bass clef, key signature of two flats (Bb, Eb), and a sequence of eighth and quarter notes.

107

107 Musical staff with bass clef, key signature of two flats (Bb, Eb), and a sequence of eighth and quarter notes.

111

111 Musical staff with bass clef, key signature of two flats (Bb, Eb), and a sequence of eighth and quarter notes.

115

115 Musical staff with bass clef, key signature of two flats (Bb, Eb), and a sequence of eighth and quarter notes.

119

119 Musical staff with bass clef, key signature of two flats (Bb, Eb), and a sequence of eighth and quarter notes.

123

123 Musical staff with bass clef, key signature of two flats (Bb, Eb), and a sequence of eighth and quarter notes.

4

127



129 (G)



135



139 (H)



143



147



151



155 (I)



159



163



167



171 (J)



175



179



183



187 (R)



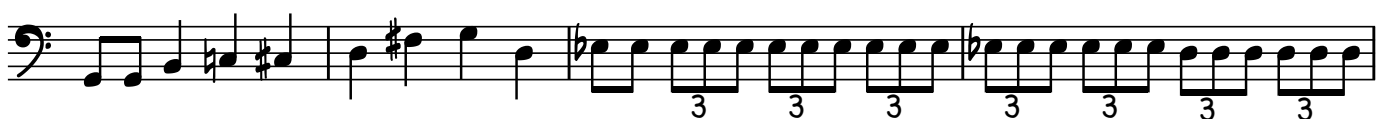
191



195



199



203 (L)



207



211



215

219

223

227

231

235 (M)

239

243

247

251

255

259 (N)



263



267



271



275



279



283

