

Triad Pairs derived from the F LYDIAN Mode

Rufus Philpot

G - TRIAD

F - TRIAD

So we get an F Major triad AND a G Major triad

3

F Major G Major

This works over an F major 7 or F major 7 #11

ALSO these occur in a D dorian mode (see example below)

So we can use the F and G major triads over a D minor chord

5

G Major

F Major

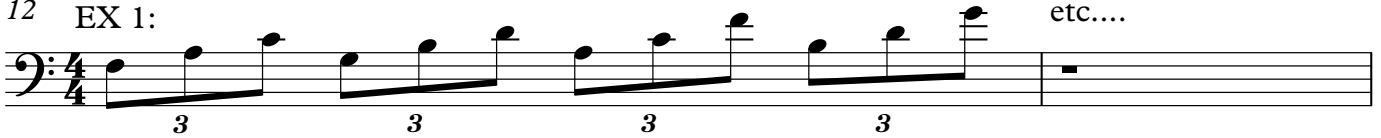
The same Major triad pair; BOTH modes are from the C Major scale

7

9



12 EX 1:



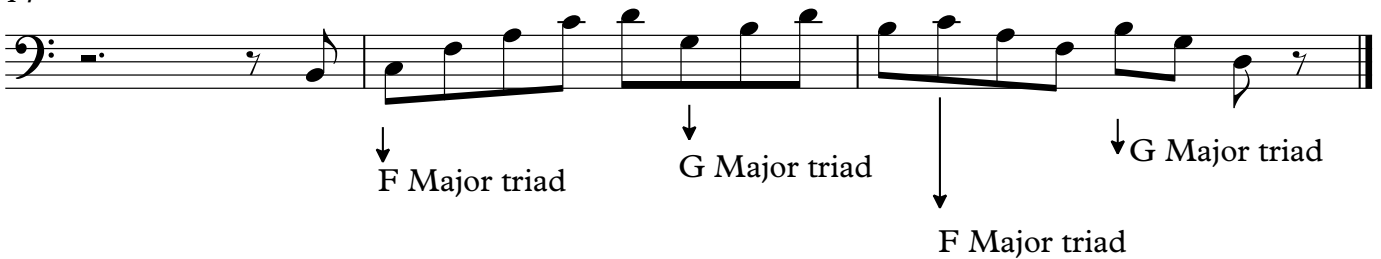
Practice Root position, first inversion, second inversion !

Note: Using a G triad based over on F Maj7 we get the 9th, #11th, 13th

↓ ↓ ↓
 G B D

EX 2: Play this an octave higher

14



This example 2 can be used over an F major7(#11)
 but also works on a D minor 7
 you can also view it as an F lydian idea on F major 7
 OR a D dorian idea on D minor 7